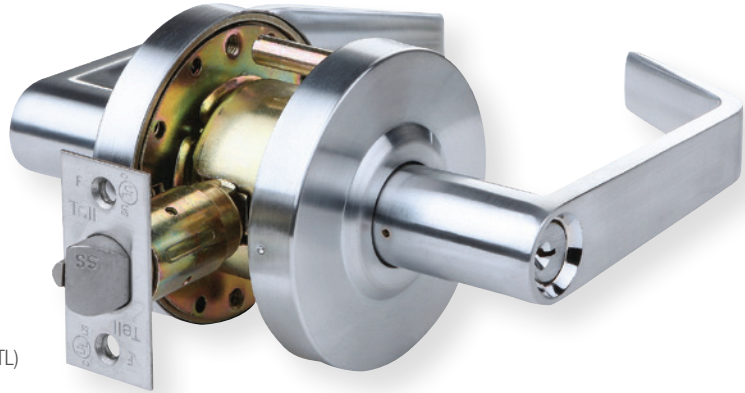


Heavy-Duty Grade 2 Cylindrical
LC2600 SERIES



Cortland (CTL)

FEATURES

- Performance**
- Complies with ANSI A156.2, Series 4000
 - Grade 2, 400,000 cycles
 - UL/ULC listed for 3-hour fire door
 - American Disabilities Act (ADA) ANSI A117.1

- Chassis**
- Cylindrical
 - Steel - coated with zinc dichromate (corrosion resistance)
 - Optional freewheeling clutch with Cortland and Sturdee

- Lever**
- Non-handed

- Latch**
- 2 3/4" Backset
 - 3/4" Housing diameter
 - 1/2" Stainless steel throw
 - 1 1/8" x 2 1/4", Square corner faceplate

- Rose**
- 3 1/4" diameter

- Thru-bolts**
- Removable thru-bolts standard

- Strike**
- ASA Strike 1 1/4" x 4 7/8"
 - Optional T-Strike 1 1/8" x 2 3/4"
 - Optional F-Strike (full lip)

- Cylinder**
- C keyway (SCC)
 - 6-pin solid brass
 - Keyed different (KD)

- Keys**
- Two nickel silver per lock cylinder

- Door Thickness**
- 1 3/8" - 2"

- Door Preparation**
- 2 1/8" Diameter for lever
 - 1" Diameter for latchbolt
 - Fits standard 161 door prep

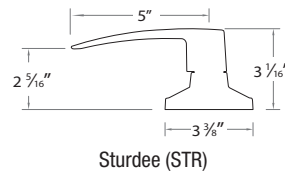
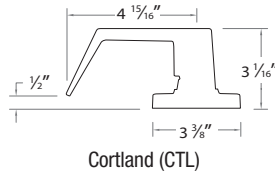
- Warranty**
- Lifetime limited

LC2600 SERIES

OPTIONS

KEYING	6-pin cylinders, can be pinned to 5-pin.	
Cylinders	Arrow A (ARA), Corbin 59A1 (C059A1), Corbin 60 (C06), Corbin Russwin L4 (CL4), Options Kwikset (KW1), Russwin D1 (RD1), Sargent LA (SAL), Schlage E (SCE), Schlage F (SCF), Weiser E (WRE), Yale 8 (YA8), Yale GA (YGA)	
Tell Cylinder	Restricted Tell keyway cylinder can key both the cylinder and interchangeable core in one lock. The cylinders and IC cores are interchangeable. Tell keyway cylinder is available only keyed to 6-pin. Tell IC cylinder can be keyed to 6-pin or 7-pin interchangeable core (IC)	
IC Keyway Cylinders (Available 6- or 7-Pin)	Best A (BA), Best B (BB), Best C (BC), Best D (BD), Best E (BE), Best F (BF), Best G (BG), Best H (BH), Best J (BJ), Best K (BK), Best L (BL), Best M (BM), Best Q (BQ), Best U (BU), Black construction core (BLK), Less core (OO), Not specified (XX)	
Keying Options	Grand master key (GMK), construction master key (CMK), master key (MK), keyed different (KD), keyed alike (KA), interchangeable core uncombined (IC), 0-bitted (OBIT)	
AVAILABLE FUNCTIONS	Entry 81 Office/Entry 82 Classroom 84 Storeroom 86	Communicating 91 Privacy Bed/Bath 76 Passage Hall/Closet 75 Single Dummy 01

LEVER STYLES



TELL FINISHES

