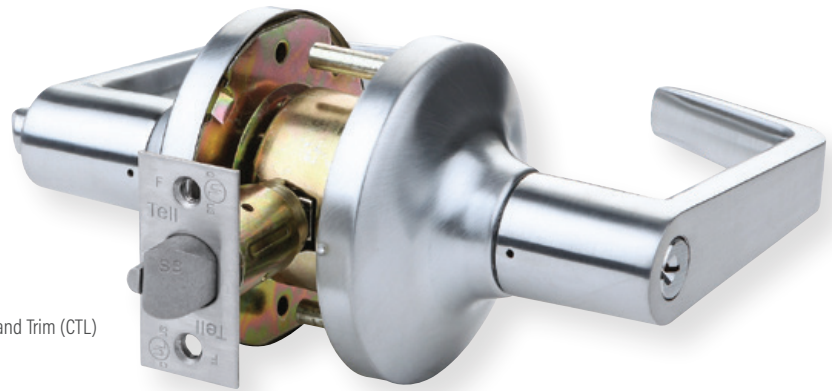


Heavy-Duty Grade 2 Cylindrical
LC2400 SERIES



Cortland Trim (CTL)

FEATURES

- Performance**
- Complies with ANSI A156.2, Series 4000
 - Grade 2, 400,000 cycles
 - UL/ULC listed for 3-hour fire door
 - American Disabilities Act (ADA) ANSI A117.1

- Chassis**
- Cylindrical
 - Steel – coated with zinc dichromate (corrosion resistance)
 - Freewheeling clutch for added security
 - Independent spring cages

- Lever**
- Solid cast non-handed

- Latch**
- 2 3/4" Backset
 - 1" Housing diameter
 - 1/2" Stainless steel throw
 - 1 1/8" x 2 1/4" Square corner faceplate

- Rose**
- 3 1/2" diameter

- Thru-bolts**
- Non-removable thru-bolts standard

- Strike**
- ASA Strike 1 1/4" x 4 7/8"
 - Optional T-Strike 1 1/8" x 2 3/4"
 - Optional F-Strike (full lip)

- Cylinder**
- C keyway (SCC)
 - 6-pin solid brass
 - Keyed different (KD)

- Keys**
- Two nickel silver per lock cylinder

- Door Thickness**
- 1 3/8" - 2"

- Door Preparation**
- 2 1/8" Diameter for lever
 - 1" Diameter for latchbolt
 - Fits standard 161 door prep with thru-bolting

- Warranty**
- Limited lifetime

LC2400 SERIES

OPTIONS

KEYING	6-pin cylinders, can be pinned to 5-pin.
Cylinders	Arrow A (ARA), Corbin 59A1 (C059A1), Corbin 60 (C06), Corbin Russwin L4 (CL4), Options Kwikset (KW1), Russwin D1 (RD1), Sargent LA (SAL), Schlage E (SCE), Schlage F (SCF), Weiser E (WRE), Yale 8 (YA8), Yale GA (YGA)
Tell Cylinder	Restricted Tell keyway cylinder can key both the cylinder and interchangeable core in one lock. The cylinders and IC cores are interchangeable. Tell keyway cylinder is available only keyed to 6-pin. Tell IC cylinder can be keyed to 6-pin or 7-pin interchangeable core (IC)
IC Keyway Cylinders (Available 6- or 7-Pin)	Best A (BA), Best B (BB), Best C (BC), Best D (BD), Best E (BE), Best F (BF), Best G (BG), Best H (BH), Best J (BJ), Best K (BK), Best L (BL), Best M (BM), Best Q (BQ), Best U (BU), Black construction core (BLK), Less core (00), Not specified (XX)
Keying Options	Grand master key (GMK), construction master key (CMK), master key (MK), keyed different (KD), keyed alike (KA), interchangeable core uncombined (IC), 0-bitted (OBIT)

AVAILABLE FUNCTIONS

Entry 81	Privacy Bed/Bath 76
Office 82	Passage Hall/Closet 75
Classroom 84	Exit Latch 80
Storeroom 86	Single Dummy 01
Communicating 91	
Intruder 110	

LEVER STYLES



Cortland



Buckingham



Sturdee

TELL FINISHES



US26D
Satin Chrome



US3
Polished Brass



US19
Matte Black



US10B
Oil Rubbed Bronze

Heavy-Duty Grade 2 Cylindrical

LC2400 SERIES

ACCESSORIES

LATCHES



CL100181 —
2 3/4" Guarded, US32D

CL100531 —
2 3/4" Guarded, US3

CL100182 —
2 3/4" Guarded with
kickoff, US32D
UL/ULC listed guarded
latchbolt with deadlatch
function. 1/2" throw. 2 3/4"
backset. Fits 161 door prep
(2 1/8" hole, 1" latch hole).



CL100906 —
2 3/4" Unguarded, US32D

CL100907 —
2 3/4" Unguarded with
kickoff, US32D
UL/ULC listed unguarded
latchbolt with non-deadlatch
function. 1/2" throw. 2 3/4"
backset. Fits 161 door prep
(2 1/8" hole, 1" latch hole).



CL100193 —
2 3/4" Guarded, US26D

CL100194 —
2 3/4" Unguarded, US26D

CL100195 —
2 3/8" Unguarded, US26D

CL100518 —
2 3/8" Guarded, US26D
Drive-in latch, used where
face plate not required
available in 2 3/8" and 2 3/4"
backset. 1/2" throw, 1" diameter.

STRIKES



CL100186 —
ASA Strike, US32D

CL100187 —
ASA Strike, US3

CL100415 —
ASA Strike, US10B
For metal frames.
(1 1/4" x 4 7/8" x 3/32").



CL100191 —
T Strike, US32D

CL100189 —
T Strike, US3

CL100420 —
T Strike, US10B
For wood frames.
(1 1/8" x 2 3/4" x 3/32").



CL100190 —
F Strike, US32D

CL100192 —
F Strike, US3

CL100581 —
F Strike, US10B
For wood residential
applications.
(1 5/8" x 2 1/4" x 3/32").

NON-RESTRICTED KEYWAY



CL100219 —
Cylinder, Schlage C, US26D

CL100584 —
Cylinder, Schlage C, US4
Standard brass 6-pin cylinder SCC
keyway, optional keyways available,
(see price list).



CL100268 —
IC Core Best A 6 Pin, US26D

CL100270 —
IC Core Best A 7 Pin, US26D

CL100269 —
IC Core Best A 6 Pin, US4

CL100271 —
IC Core Best A 7 Pin, US4
Small format interchangeable core brass
cylinder 6-pin standard, 7-pin available.
Best "A" keyway standard.



TELL RESTRICTED KEYWAY



Tell Cylinders:

CL101503 —
6-pin Tell cylinder, US26D

CL101504 —
6-pin Tell cylinder, US4



**Tell Interchangeable
Cores:**

CL101499 —
6-pin Tell IC core, US26D

CL101500 —
6-pin Tell IC core, US4

CL101501 —
7-pin Tell IC core, US26D

CL101502 —
7-pin Tell IC core, US4

FINISHES: US32D=Satin Stainless Steel, US3=Bright Brass, US26D=Satin Chrome, US4=Satin Brass, US10B=Oil Rubbed Bronze

Heavy-Duty Grade 2 Cylindrical LC2400 SERIES

FUNCTION CHART

OUTSIDE INSIDE	FUNCTION	FEATURES	ANSI
	Entry 81	<ul style="list-style-type: none"> Latchbolt operated by lever from either side Outside lever locks by push button from inside Unlocks by key from outside or rotating inside lever When outside lever locked by push and turn button from inside, key from outside or rotating inside lever retracts latch, does not unlock outside lever 	F81
	Office 82	<ul style="list-style-type: none"> Deadlocking latch bolt operated by lever from either side except when outside lever is locked by push button or other locking device on inside. When outside lever is locked, operating key in outside lever or operating inside lever unlocks push button or other locking device and retracts latch bolt. Closing door does not release push button or other locking device. 	F82
	Classroom 84	<ul style="list-style-type: none"> Latchbolt operated by lever from each side Outside lever locked or unlocked by key from outside Inside lever always operates latch 	F84
	Storeroom 86	<ul style="list-style-type: none"> Latch operated by rotating inside lever or key in outside lever Outside lever always fixed 	F86
	Double Cylinder Storeroom 91	<ul style="list-style-type: none"> Deadlocking latchbolt operated by either lever Key in either lever locks or unlocks both levers 	F80

OUTSIDE INSIDE	FUNCTION	FEATURES	ANSI
	Intruder 110	<ul style="list-style-type: none"> For classroom doors Deadlatching latchbolt Either lever operates latchbolt (except when outside lever is locked by key from either side) Outside lever remains locked upon egress Inside lever always active 	F110
	Privacy Bed/Bath 76	<ul style="list-style-type: none"> Latchbolt operated by lever from either side Outside lever locked by push button on inside Unlocked by emergency release on outside, rotating inside lever, or closing door 	F76
	Passage Hall/Closet 75	<ul style="list-style-type: none"> Latchbolt operated by lever from either side at all times 	F75
	Exit Latch 80	<ul style="list-style-type: none"> Latchbolt operated by knob from one side at all times 	
	Single Dummy 01	<ul style="list-style-type: none"> Pull knob one side No mechanical operation 	—

HOW TO ORDER (see product page for complete lists of options)

TRIM	TYPE	GRADE	PRODUCT FAMILY	FUNCTION	THRU-BOLT	LEVER STYLE	FINISH	BACKSET	STRIKE	IC KEYWAY CYLINDER	NON-IC KEYWAY CYLINDER	KEYING	
				82						BG	— Best G	OBIT	— 0-Bitted
				81						BF	— Best F	IC	— Not Specified
				81						BE	— Best E	KA	— Keyed Alike
				80						BD	— Best D	KD	— Keyed Different
				76		STR	— Sturdee			BC	— Best C	MK	— Master Key
				75		BUC	— Buckingham	238	— 2 3/8"	BB	— Best B	CMK	— Master Key
L	— Lever	2		01		CTL	— Cortland	234	— 2 3/4"	BA	— Best A	GMK	— Grand Master Key
L	C	2	4	01	R	CTL	US26D	234	T	BA [†]	SCC [*]	GMK	
	C	— Cylindrical	4		R	— Removable Thru-Bolt (optional)	US26D	— Satin Chrome	T	— T	SCC	— C Keyway (SCC) 6-Pin	
							US3	— Bright Brass	F	— Full Lip	ARA	— Arrow A	
							US10B	— Oil Rubbed Bronze	A	— ASA	C059A1	— Corbin 59A1	
											C06	— Corbin 60	
											CL4	— Corbin Russwin L4	
											KW1	— Kwikset KW1	
											RD1	— Russwin D1	

* IC Cylinders available, come in Satin Chrome (26D) only.

† Choose one keyway format: either non-IC Keyway cylinder or IC Keyway cylinder.

Most cylinders come keyed 6-pin, can be keyed 5-pin on request;

Tell Restricted Keyway cylinder is only keyed to 6-pin.

IC cylinders can be keyed 6- or 7-pin.

COMMERCIAL DOORS & HARDWARE | 800.433.4047 | tellmfg.com