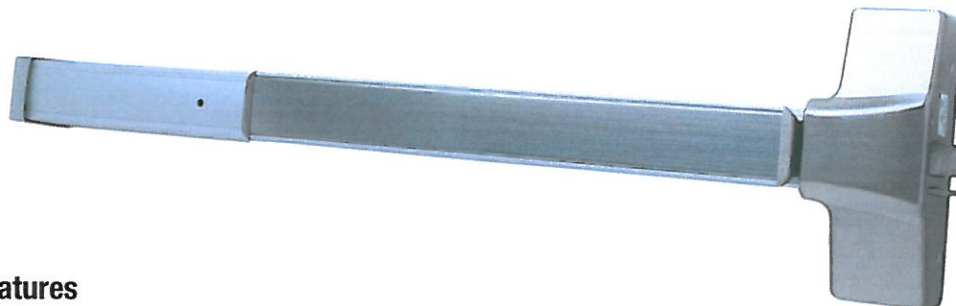




9500 SERIES

Heavy-Duty Commercial Grade 1 Architectural Rim Exit Device



Standard Features

- **Performance** Complies with ANSI A156.3, 2001, Grade 1, UL Listed
- **Rail** Fits 30" to 36" doors
- **Latch** Stainless steel ¾" throw with deadlatch feature
- **Backset** 2-3/4"
- **Strikes** Adjustable with slotted holes for adjustments
- **Standard Cylinder** Standard cylinder Schlage (SCC) - 6-pin solid brass, C keyway, keyed different (KD).
- **Fasteners** Accommodates wood and metal doors with thru bolts standard
- **Door Range** 1-3/4" to 2-1/4" thick
- **Door Preparation** Surface mounted and covers 161 prep
- **Warranty** 10 years

Optional Features

- **Fire Rated** Fire Rated device available for use on doors rated up to 3 hours.
- **UL Listed** 3 hour fire rated device available
- **Exterior Trim** Exterior blank pull, exterior pull with cylinder cut out, entry ball knob trim, storeroom ball knob trim, entry lever trim without clutch, exterior thumbpiece trim, pull trim with rim cylinder, exterior escutcheon lever trim
- **Strikes** Other strikes available

Keying Options for Select Lever Trim

- **Tell Cylinder** Restricted Tell keyway cylinder can key both the cylinder and interchangeable core in one lock. The cylinders and IC cores are interchangeable. Tell keyway cylinder is available only keyed to 6-pin. Tell IC cylinder can be keyed to 6-pin or 7-pin interchangeable core (IC).
- **Other Cylinder Options** Arrow A (ARA), Corbin 59A1 (C059A1), Corbin 60 (C06), Corbin Russwin L4 (CL4), Kwikset (KW1), Russwin D1 (RD1), Sargent LA (SAL), Schlage E (SCE), Schlage F (SCF), Weiser E (WRE), Yale 8 (YA8), Yale GA (YGA)
ALL CYLINDERS 6-PIN. CAN ALSO BE PINNED 5-PIN.
- **IC Keyway Cylinder** Tell, Best A (BA), Best B (BB), Best C (BC), Best D (BD), Best E (BE), Best F (BF), Best G (BG), Best H (BH), Best J (BJ), Best K (BK), Best L (BL), Best M (BM), Best Q (BQ), Best
AVAILABLE 6- OR 7-PIN
- **Keying Options** Grand master key (GMK), construction master key (CMK), master key (MK), keyed different (KD), keyed alike (KA), interchangeable core uncombined (IC), 0-bitted (0BIT)

9500 Series Accessories



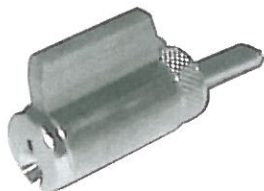
Non-Restricted Keyway

FOR LEVER TRIM (CTL)

CL100219 —
Cylinder, Schlage C, US26D

CL100584 —
Cylinder, Schlage C, US4

Standard brass 6-pin cylinder
SCC keyway, optional keyways
available, (see price list).



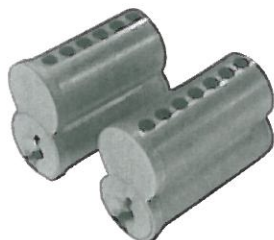
CL100268 —
IC Core Best A 6 Pin, US26D

CL100270 —
IC Core Best A 7 Pin, US26D

CL100269 —
IC Core Best A 6 Pin, US4

CL100271 —
IC Core Best A 7 Pin, US4

Small format interchangeable
core brass cylinder 6-pin
standard, 7-pin available. Best
"A" keyway standard.



Tell Restricted Keyway

FOR LEVER TRIM (CTL), THUMBPIECE
TRIM (TP81), ESCUTCHEON LEVER TRIM
(ESC), PULL TRIM (PT881)

TELL CYLINDERS:

CL101503 —
6 pin Tell cylinder, US26D

CL101504 —
6 pin Tell cylinder, US4



**TELL INTERCHANGEABLE
CORES:**

CL101499 —
6 pin Tell IC core, US26D

CL101500 —
6 pin Tell IC core, US4

CL101501 —
7 pin Tell IC core, US26D

CL101502 —
7 pin Tell IC core, US4



416 Strike

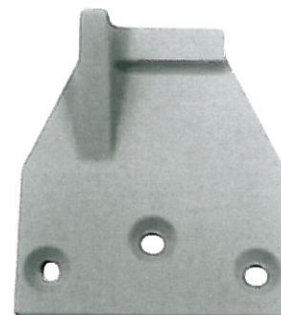
Standard strike for rim
exit device. Slotted
holes for easy
adjustment. Black
powder coated finish.



Overlapping Strike

EX100007 (US32D)

Optional strike used on inactive
door when pairs of doors require
rim exit device on active door.



FINISHES: US26D=Satin Chrome, US4=Satin Brass, US32D=Satin Stainless Steel

TELL MANUFACTURING, INC — Page 12 — 2012

CORPORATE OFFICE: 18 Richard Drive, Lititz, PA 17543 **TOLL FREE:** 800-433-4047 **PHONE:** 717-625-2990 **FAX:** 717-625-7095

OTHER LOCATIONS: HOUSTON, TEXAS ELKHART, INDIANA MIRA LOMA, CALIFORNIA

WEBSITE: www.tellmfg.com



9500 Series Trim

8PDT

EX100013 (AL)

Exterior blank pull.



8P03

EX100014 (AL)

Exterior pull with cylinder cut out.



EMP808

EX100010 (entry, US32D)

EMP875

EX100011 (passage, US32D)

EMP886

EX100012 (storeroom, US32D)

Exterior sectional ball knob trim.



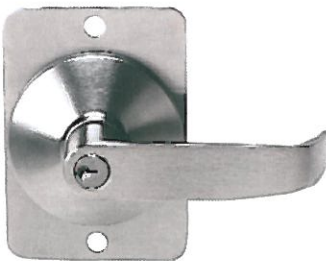
CTL / Lever Trim (w/out clutch)

EX100005 (entry, US26D)

EX100006 (passage, US26D)

EX100038 (storeroom, US26D)

Exterior sectional lever trim.



TP81

EX100008 (AL)

Exterior thumbpiece trim, includes 1-1/4" mortise cylinder SCC



PT881

EX100090 (AL)

Pull trim with rim cylinder



ESC / Escutcheon Trim

EX100054 (entry, US26D)

EX100056 (passage, US26D)

EX100055 (storeroom, US26D)

EX100057 (dummy, US26D)

Exterior escutcheon free wheeling lever trim, includes 1-1/4" mortise cylinder SCC



NOTE: AL=Aluminum, US32D=Satin Stainless Steel, US26D=Satin Chrome

TELL MANUFACTURING, INC — Page 13 — 2012

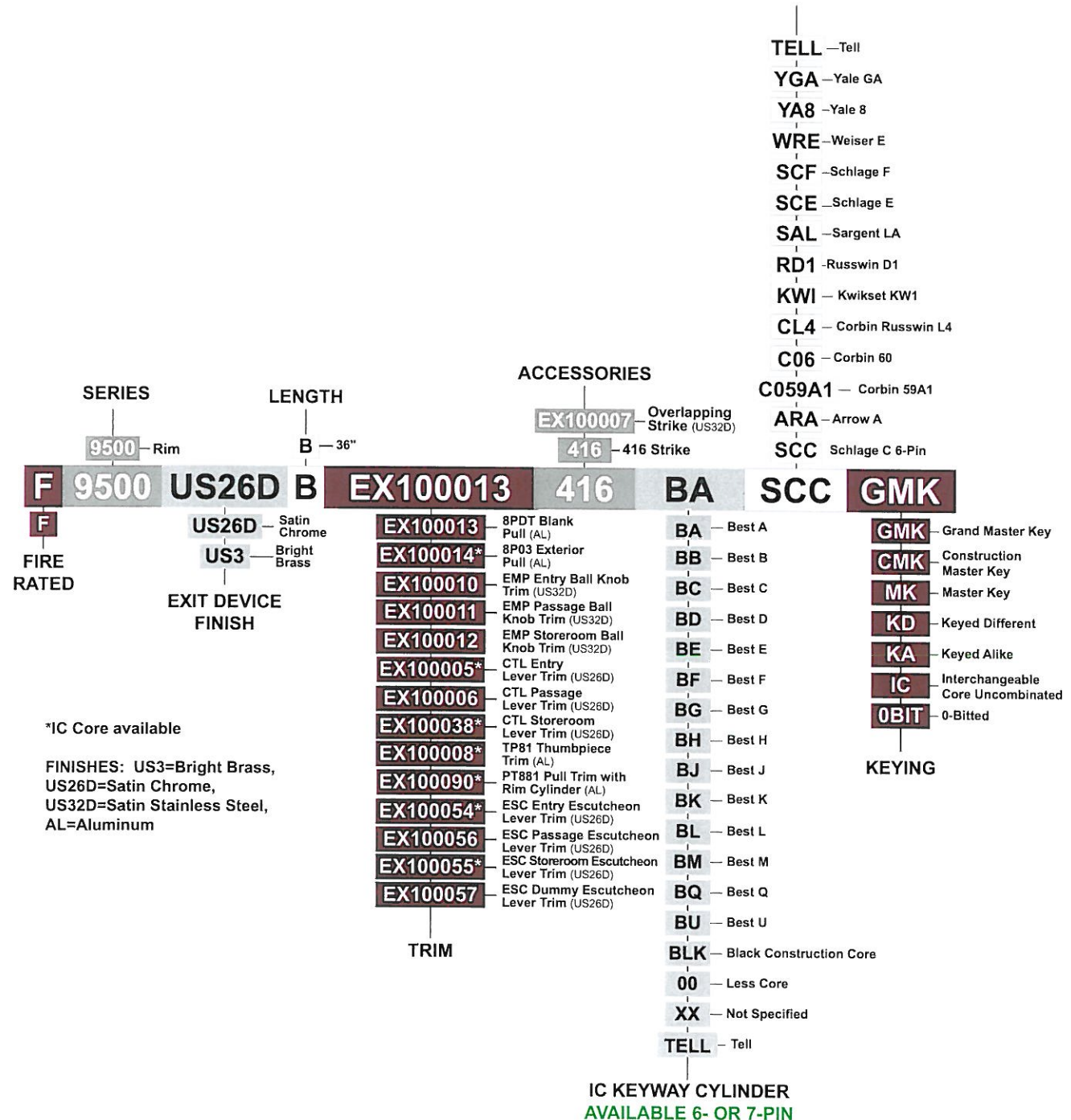
CORPORATE OFFICE: 18 Richard Drive, Lititz, PA 17543 TOLL FREE: 800-433-4047 PHONE: 717-625-2990 FAX: 717-625-7095
OTHER LOCATIONS: HOUSTON, TEXAS ELKHART, INDIANA MIRA LOMA, CALIFORNIA

WEBSITE: www.tellmfg.com



How to Order 9500 Series

NON-IC KEYWAY CYLINDER
 ALL CYLINDERS AVAILABLE 6-PIN. CAN ALSO BE PINNED 5-PIN.
 TELL KEYWAY CYLINDER IS AVAILABLE ONLY KEYED TO 6-PIN.



IC KEYWAY CYLINDER
 AVAILABLE 6- OR 7-PIN

TELL MANUFACTURING, INC — Page 14 — 2012

CORPORATE OFFICE: 18 Richard Drive, Lititz, PA 17543 TOLL FREE: 800-433-4047 PHONE: 717-625-2990 FAX: 717-625-7095
 OTHER LOCATIONS: HOUSTON, TEXAS ELKHART, INDIANA MIRA LOMA, CALIFORNIA
 WEBSITE: www.tellmfg.com