



LT2000 SERIES

Light-Duty Tubular Grade 2 Leversets



Standard Features

- **Performance** Complies with ANSI A156.2, Series 4000, Grade 2, (400,000 cycles), UL listed for 3 hour fire door ANSI A117.1 American Disabilities Act (ADA)
- **Chassis** Tubular, steel - coated with zinc dichromate (corrosion resistance)
- **Lever** Non-handed, solid cast
- **Latch** 1-1/8" x 2-1/4", square corner faceplate, 1" housing diameter (stainless steel), 1/2" throw
- **Rose** 3" diameter
- **Backset** Adjustable 2-3/4" or 2-3/8"
- **Strike** Square corner 1-1/4" x 4-7/8" ANSI **ASA Strike**
- **Standard Cylinder** Standard cylinder Schlage (SCC) - 6-pin solid brass, C keyway, keyed different (KD).
- **Keys** Two nickel silver per lock cylinder
- **Door Range** 1-3/8" to 2"
- **Door Preparation** 2-1/8" diameter for lever, 1" diameter for latch bolt. Fits standard 161 door prep.
- **Warranty** 1 year limited

Optional Features

- **Strike** **T Strike** (1-1/8" x 2-3/4"), and **F Strike** (full lip)

Keying Options

- **Tell Cylinder** Restricted Tell keyway cylinder available, optional. Tell keyway cylinder is available **only** keyed to 6-pin.
- **Other Cylinder Options** Arrow A (ARA), Corbin 59A1 (C059A1), Corbin 60 (C06), Corbin Russwin L4 (CL4), Kwikset (KW1), Russwin D1 (RD1), Sargent LA (SAL), Schlage E (SCE), Schlage F (SCF), Weiser E (WRE), Yale 8 (YA8), Yale GA (YGA)
ALL CYLINDERS 6-PIN. CAN ALSO BE PINNED 5-PIN.
- **Keying Options** Grand master key (GMK), construction master key (CMK), master key (MK), keyed different (KD), keyed alike (KA), 0-bitted (0BIT)

TELL MANUFACTURING, INC — Page 13 — 2012

CORPORATE OFFICE: 18 Richard Drive, Lititz, PA 17543 TOLL FREE: 800-433-4047 PHONE: 717-625-2990 FAX: 717-625-7095

OTHER LOCATIONS: HOUSTON, TEXAS ELKHART, INDIANA MIRA LOMA, CALIFORNIA

WEBSITE: www.tellmfg.com



LT2000 Series Function Chart

FUNCTION	FUNCTION NO.	OUTSIDE	INSIDE	FUNCTION DESCRIPTION	ANSI NO.
Entry/Office	81			<ul style="list-style-type: none"> ■ Latchbolt operated by lever from either side ■ Outside lever locked by turn button from inside ■ Unlocked by key from outside or rotating inside lever 	F82
Storeroom	86			<ul style="list-style-type: none"> ■ Latch operated by rotating inside lever or key in outside lever ■ Outside lever always fixed 	F86
Privacy Bedroom/Bathroom	76			<ul style="list-style-type: none"> ■ Latchbolt operated by lever from either side ■ Outside lever locked by push button on inside ■ Unlocked by emergency release on outside, rotating inside lever 	F76
Passage Hall/Closet	75			<ul style="list-style-type: none"> ■ Latchbolt operated by lever from either side at all times 	F75
Single Dummy	01			<ul style="list-style-type: none"> ■ Pull lever one side ■ No mechanical operation 	



LT2000 Series Latches

CL100506

Drive-in latch, non-dead latching, used where face plate not required. 1/2" throw. Backset adjustable 2-3/8" to 2-3/4".



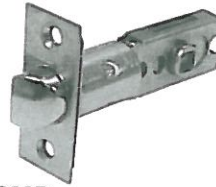
CL100505

Drive-in latch, dead latching, used where face plate not required. 1/2" throw. Backset adjustable 2-3/8" to 2-3/4".



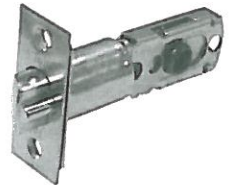
CL100504, US32D

U.L. listed latch bolt with non-deadlatching function. 1/2" throw. Backset adjustable 2-3/8" to 2-3/4". Fits 160 door prep (2-1/8" hole, 7/8" latch hole) or fits 161 door prep (2-1/8" hole, 1" latch hole).



CL100503, US32D

U.L. listed latch bolt with deadlatching function. 1/2" throw. Backset adjustable 2-3/8" to 2-3/4". Fits 160 door prep (2-1/8" hole, 7/8" latch hole) or fits 161 door prep (2-1/8" hole, 1" latch hole).



LT2000 Series Strikes

CL100186 — ASA Strike, US32D

CL100187 — ASA Strike, US3

CL100415 — ASA Strike, US10B

For metal frames. (1-1/4" x 4-7/8" x 3/32").



CL100191 — T Strike, US32D

CL100189 — T Strike, US3

CL100420 — T Strike, US10B

For wood frames. (1-1/8" x 2-3/4" x 3/32").



CL100190 — F Strike, US32D

CL100192 — F Strike, US3

CL100581 — F Strike, US10B

For wood residential applications. (1-5/8" x 2-1/4" x 3/32").



LT2000 Series Non-Restricted Keyway

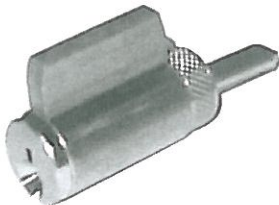
CL100219 —

Cylinder, Schlage C, US26D

CL100584 —

Cylinder, Schlage C, US4

Standard brass 6-pin cylinder
SCC keyway, optional keyways
available (see price list).



LT2000 Series Tell Restricted Keyway

TELL CYLINDERS:

CL101503 —

6 pin Tell cylinder, US26D

CL101504 —

6 pin Tell cylinder, US4



FINISHES: US32D=Satin Stainless Steel, US3=Bright Brass, US26D=Satin Chrome, US4=Satin Brass, US10B=Oil Rubbed Bronze

TELL MANUFACTURING, INC — Page 15 — 2012

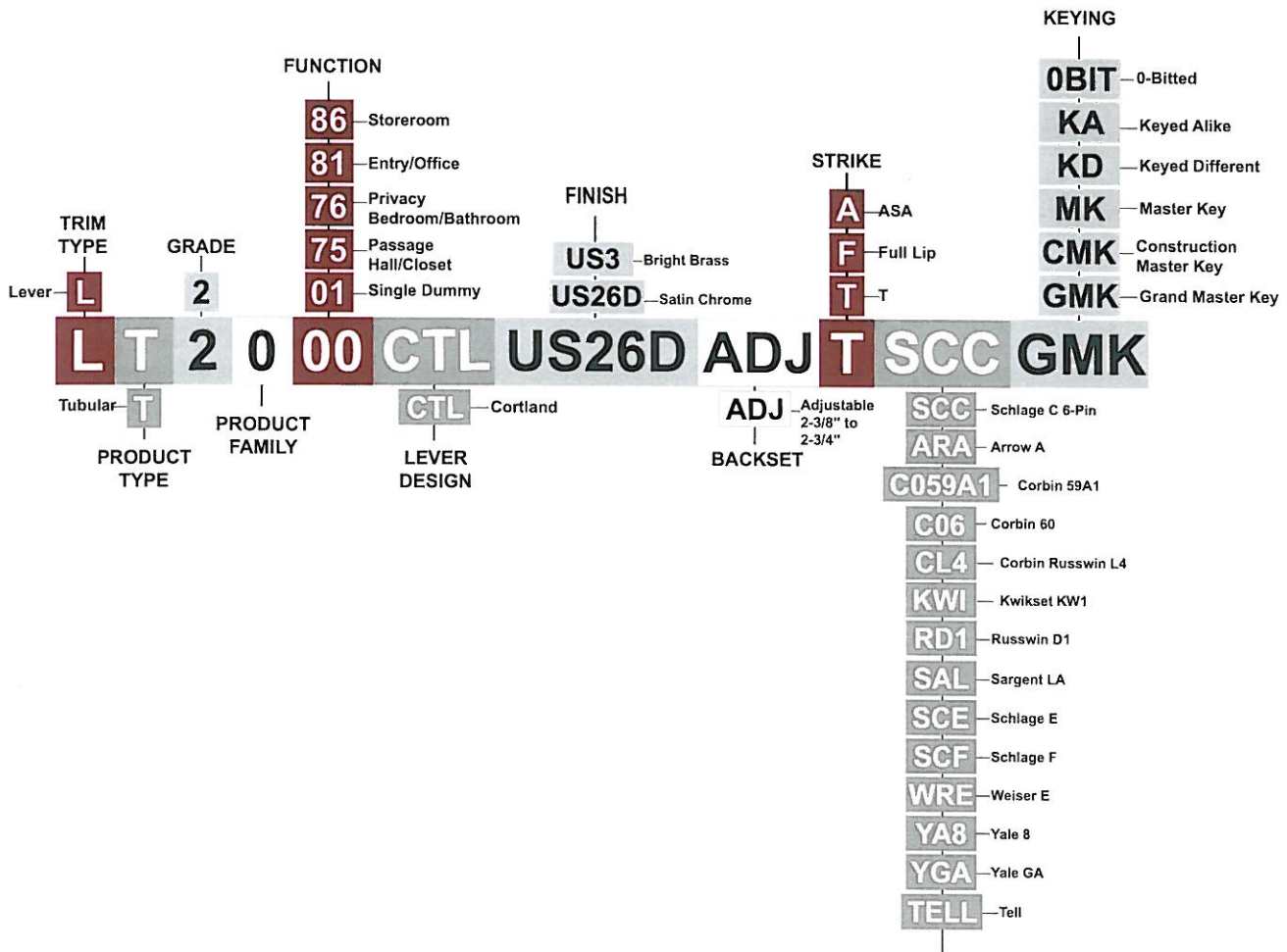
CORPORATE OFFICE: 18 Richard Drive, Lititz, PA 17543 TOLL FREE: 800-433-4047 PHONE: 717-625-2990 FAX: 717-625-7095

OTHER LOCATIONS: HOUSTON, TEXAS ELKHART, INDIANA MIRA LOMA, CALIFORNIA

WEBSITE: www.tellmfg.com



How to Order LT2000 Series



KEYWAY CYLINDER
ALL CYLINDERS AVAILABLE 6-PIN. CAN ALSO BE PINNED 5-PIN.
TELL KEYWAY CYLINDER IS AVAILABLE ONLY KEYED TO 6-PIN.