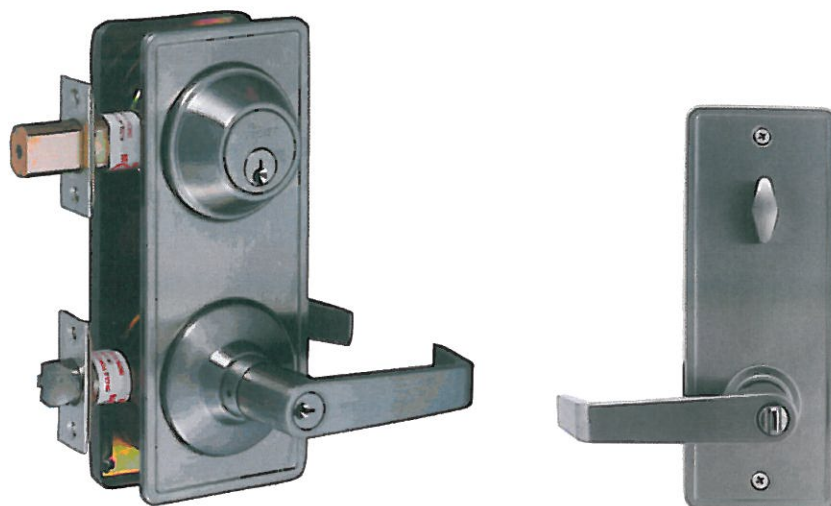




LC2700 SERIES

Standard-Duty Cylindrical Grade 2 Interconnected Leversets



Standard Features

- **Performance** Complies with ANSI A156.2, Series 4000, Grade 2, (400,000 cycles), UL listed for 3 hour fire door ADA code compliant
- **Chassis** Cylindrical, steel - coated with zinc dichromate (corrosion resistance)
- **Lever** Non-handed
- **Latch** 1-1/8" x 2-1/4", square corner faceplate, 3/4" housing diameter, 1/2" throw (stainless steel)
- **Backset** 2-3/4"
- **Strike** 2-3/4" x 1-1/8" standard T-strike. Optional strikes available.
- **Standard Cylinder** Standard cylinder Schlage (SCC) - 6-pin solid brass, C keyway, keyed different (KD).
- **Keys** Two nickel silver per lock
- **Door Range** 1-3/8" to 1-3/4" door thickness
- **Door Preparation** 2-1/8" diameter for bore, 1" diameter for latch bore. Fits standard 161 door prep, 4" centers.
- **Warranty** 1 year limited

Keying Options

- **Tell Cylinder** Restricted Tell keyway cylinder available, optional. Tell keyway cylinder is available **only** keyed to 6-pin.
- **Other Cylinder Options** Arrow A (ARA), Corbin 59A1 (C059A1), Corbin 60 (C06), Corbin Russwin L4 (CL4), Kwikset (KW1), Russwin D1 (RD1), Sargent LA (SAL), Schlage E (SCE), Schlage F (SCF), Weiser E (WRE), Yale 8 (YA8), Yale GA (YGA)
ALL CYLINDERS 6-PIN. CAN ALSO BE PINNED 5-PIN.
- **Keying Options** Grand master key (GMK), construction master key (CMK), master key (MK), keyed different (KD), keyed alike (KA), 0-bitted (0BIT)

TELL MANUFACTURING, INC — Page 37 — 2012

CORPORATE OFFICE: 18 Richard Drive, Lititz, PA 17543 TOLL FREE: 800-433-4047 PHONE: 717-625-2990 FAX: 717-625-7095

OTHER LOCATIONS: HOUSTON, TEXAS ELKHART, INDIANA MIRA LOMA, CALIFORNIA

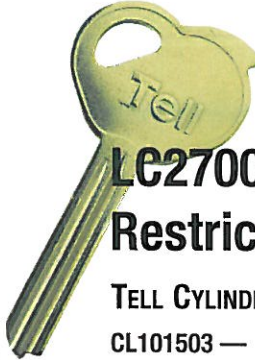
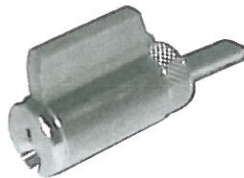
WEBSITE: www.tellmfg.com



ACCESSORIES

LC2700 Series Non-Restricted Keyway

CL100219 —
Cylinder, Schlage C, US26D
CL100584 —
Cylinder, Schlage C, US4
Standard brass 6-pin cylinder
SCC keyway, optional keyways
available (see price list).

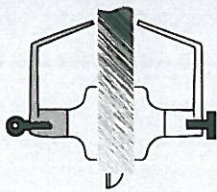
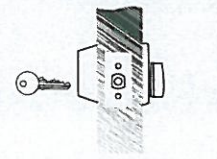


LC2700 Series Tell Restricted Keyway

TELL CYLINDERS:
CL101503 —
6 pin Tell cylinder, US26D
CL101504 —
6 pin Tell cylinder, US4



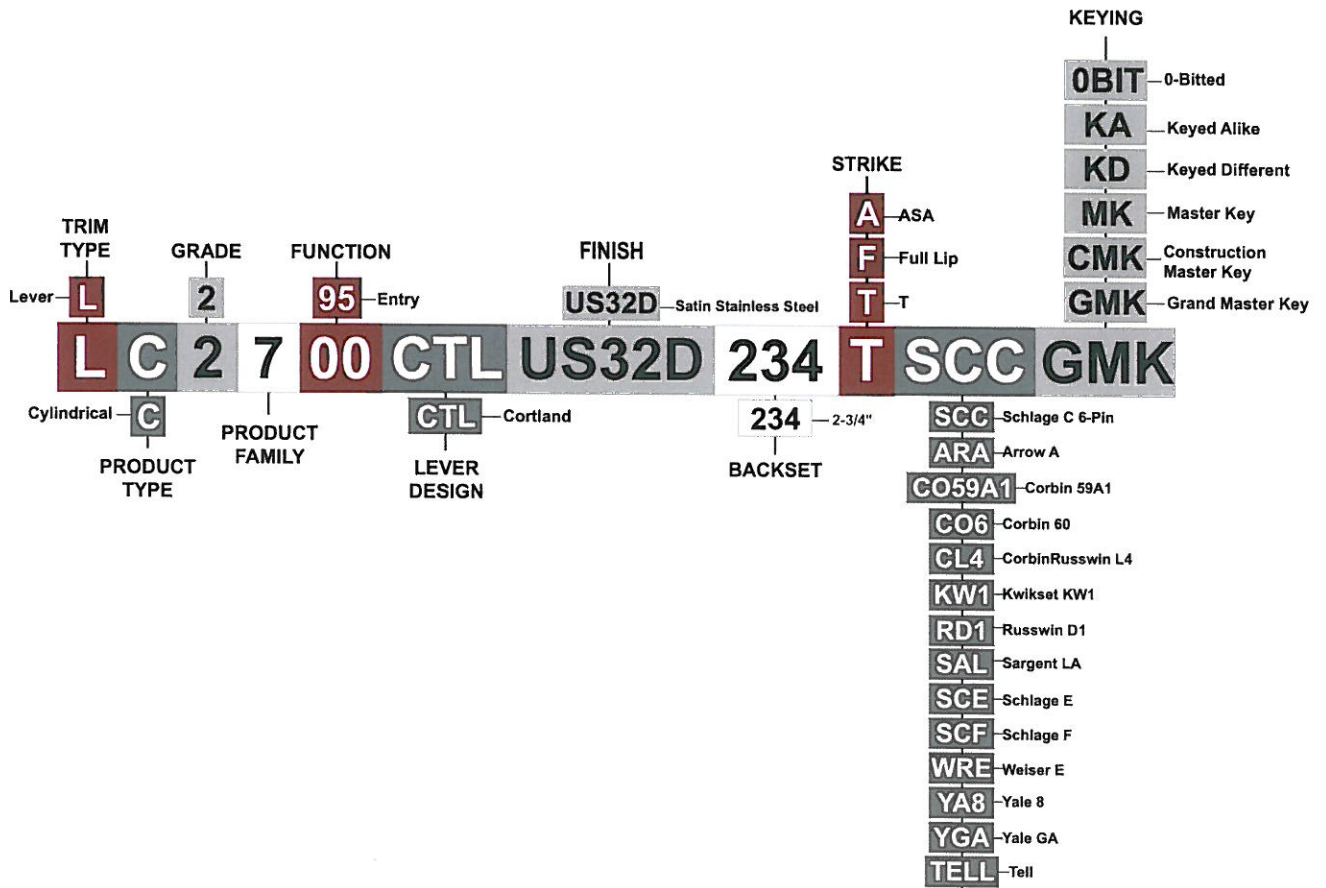
LC2700 Series Function Chart

FUNCTION	FUNCTION NO.	OUTSIDE	INSIDE	FUNCTION DESCRIPTION	ANSI NO.
Entry	95			<ul style="list-style-type: none"> ▪ Latchbolt operated by lever from either side ▪ Rotating turn from inside or key from outside extends deadbolt to locked position ▪ Both deadbolt and latch bolt are retracted to unlocked position by operating inside lever 	F95



How to Order LC2700 Series

TELL PART NUMBER: CL100850



KEYWAY CYLINDER
 ALL CYLINDERS AVAILABLE 6-PIN. CAN ALSO BE PINNED 5-PIN.
 TELL KEYWAY CYLINDER IS AVAILABLE ONLY KEYED TO 6-PIN.