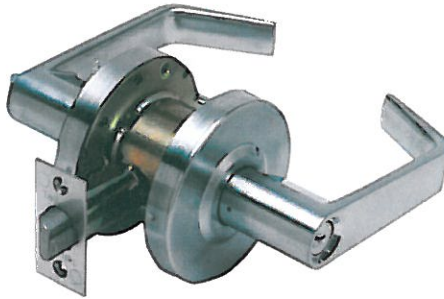


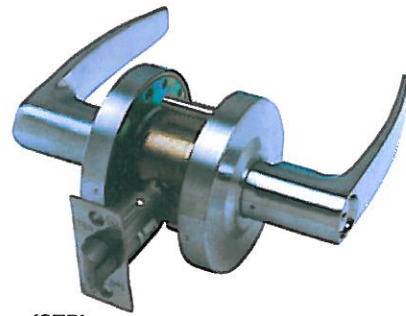


LC2600 SERIES

Standard-Duty Cylindrical Grade 2 Leversets



Cortland (CTL)



Sturdee (STR)

Standard Features

- **Performance** Complies with ANSI A156.2, Series 4000, Grade 2, 400,000 cycles, ANSI A117.1 accessibility (ADA) code, UL listed for 3 hour fire door
- **Chassis** Cylindrical, steel-coated w/ zinc dichronate (corrosion resistance)
- **Lever** Non-handed
- **Latch** 1-1/8" x 2-1/4" square corner faceplate, 3/4" housing, 1/2" throw (stainless steel)
- **Rose** 3-1/4" diameter
- **Thru-bolts** Removable thru-bolts standard
- **Backset** 2-3/8" or 2-3/4"
- **Strike** Square corner 1-1/4" x 4-7/8" ANSI ASA Strike
- **Standard Cylinder** Standard cylinder Schlage (SCC) - 6-pin solid brass, C keyway, keyed different (KD).
- **Keys** Two nickel silver per lock
- **Door Range** 1-3/8" to 2"
- **Door Preparation** 2-1/8" diameter for bore, 1" diameter latch bore. Fits standard 161 door prep.
- **Warranty** 1 year limited

Optional Features

- **Chassis** Freewheeling clutch
- **Strike** **T Strike** (1-1/8" x 2-3/4"), and **F Strike** (full lip)

Keying Options

- **Tell Cylinder** Restricted Tell keyway cylinder available, optional. Tell keyway cylinder is available **only** keyed to 6-pin.
- **Other Cylinder Options** Arrow A (ARA), Corbin 59A1 (C059A1), Corbin 60 (C06), Corbin Russwin L4 (CL4), Kwikset (KW1), Russwin D1 (RD1), Sargent LA (SAL), Schlage E (SCE), Schlage F (SCF), Weiser E (WRE), Yale 8 (YA8), Yale GA (YGA)
ALL CYLINDERS 6-PIN. CAN ALSO BE PINNED 5-PIN.
- **Keying Options** Grand master key (GMK), construction master key (CMK), master key (MK), keyed different (KD), keyed alike (KA), 0-bitted (0BIT)

TELL MANUFACTURING, INC — Page 33 — 2012

CORPORATE OFFICE: 18 Richard Drive, Lititz, PA 17543 TOLL FREE: 800-433-4047 PHONE: 717-625-2990 FAX: 717-625-7095

OTHER LOCATIONS: HOUSTON, TEXAS ELKHART, INDIANA MIRA LOMA, CALIFORNIA

WEBSITE: www.tellmfg.com



LC2600 Series Function Chart

FUNCTION	FUNCTION NO.	OUTSIDE	INSIDE	FUNCTION DESCRIPTION	ANSI NO.
Entry/Office	81			<ul style="list-style-type: none"> ■ Latchbolt operated by lever from either side ■ Outside lever locked by turn button from inside ■ Unlocked by key from outside or rotating inside lever 	F82
Entry	82			<ul style="list-style-type: none"> ■ Latchbolt operated by lever from either side ■ Outside lever locked by push button from inside ■ Outside unlocked by key from outside or rotating inside lever 	F82
Classroom	84			<ul style="list-style-type: none"> ■ Latchbolt operated by lever from each side ■ Outside lever locked or unlocked by key from outside ■ Inside lever always operates latch 	F84
Storeroom	86			<ul style="list-style-type: none"> ■ Latch operated by rotating inside lever or key in outside lever ■ Outside lever always fixed 	F86
Privacy Bedroom/Bathroom	76			<ul style="list-style-type: none"> ■ Latchbolt operated by lever from either side ■ Outside lever locked by push button on inside ■ Unlocked by emergency release on outside, rotating inside lever, or closing door 	F76
Passage/Closet	75			<ul style="list-style-type: none"> ■ Latchbolt operated by lever from either side at all times 	F75
Single Dummy	01			<ul style="list-style-type: none"> ■ Pull lever one side ■ No mechanical operation 	



ACCESSORIES

LC2600 Series Strikes

CL100186 — ASA Strike, US32D

CL100187 — ASA Strike, US3

CL100415 — ASA Strike, US10B

For metal frames. (1-1/4" x 4-7/8" x 3/32").

CL100191 — T Strike, US32D

CL100189 — T Strike, US3

CL100420 — T Strike, US10B

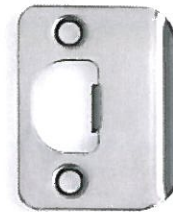
For wood frames. (1-1/8" x 2-3/4" x 3/32").

CL100190 — F Strike, US32D

CL100192 — F Strike, US3

CL100581 — F Strike, US10B

For wood residential applications.
(1-5/8" x 2-1/4" x 3/32").

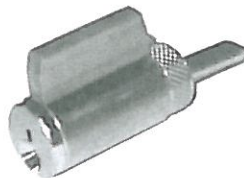


LC2600 Series Non-Restricted Keyway

CL100219 —
Cylinder, Schlage C, US26D

CL100584 —
Cylinder, Schlage C, US4

Standard brass 6-pin cylinder
SCC keyway, optional keyways
available (see price list).



LC2600 Series Tell Restricted Keyway

TELL CYLINDERS:

CL101503 —
6 pin Tell cylinder, US26D

CL101504 —
6 pin Tell cylinder, US4



FINISHES: US32D=Satin Stainless Steel, US3=Bright Brass, US26D=Satin Chrome, US10B=Oil Rubbed Bronze

TELL MANUFACTURING, INC — Page 35 — 2012

CORPORATE OFFICE: 18 Richard Drive, Litz, PA 17543 TOLL FREE: 800-433-4047 PHONE: 717-625-2990 FAX: 717-625-7095

OTHER LOCATIONS: HOUSTON, TEXAS ELKHART, INDIANA MIRA LOMA, CALIFORNIA

WEBSITE: www.tellmfg.com



How to Order LC2600 Series

