



LC1200 SERIES

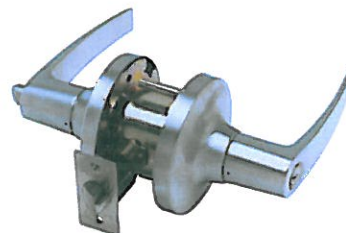
Heavy-Duty Commercial Grade 1 Leversets



Cortland (CTL)



Buckingham (BUC)



Sturdee (STR)

Standard Features

- **Performance** Complies with ANSI A156.2, Series 4000, Grade 1, (800,000 cycles), UL listed for 3 hour fire door ANSI A117.1 American Disabilities Act (ADA)
- **Chassis** Cylindrical, steel - coated with zinc dichromate (corrosion resistance), freewheeling clutch (added security from hammer attacks), independent spring cages
- **Lever** Non-handed, solid cast
- **Latch** 1-1/8" x 2-1/4", square corner faceplate, 1" housing diameter (stainless steel), 1/2" throw
- **Rose** 3-1/2" diameter
- **Backset** 2-3/4"
- **Strike** Square corner 1-1/4" x 4-7/8" ANSI **ASA Strike**
- **Standard Cylinder** Standard cylinder Schlage (SCC) - 6-pin solid brass, C keyway, keyed different (KD).
- **Keys** Two nickel silver per lock cylinder
- **Cylinder** Other manufacturers including small format interchangeable cores
- **Door Range** 1-3/8" - 2"
- **Door Preparation** 2-1/8" diameter for lever, 1" diameter for latchbolt. Fits standard 161 door prep with through-bolting through the door.
- **Warranty** 5 year limited

Optional Features

- **Strike** **T Strike** (1-1/8" x 2-3/4"), and **F Strike** (full lip)

Keying Options

- **Tell Cylinder** Restricted Tell keyway cylinder can key both the cylinder and interchangeable core in one lock. The cylinders and IC cores are interchangeable. Tell keyway cylinder is available **only** keyed to 6-pin. Tell IC cylinder can be keyed to 6-pin or 7-pin interchangeable core (IC).
- **Other Cylinder Options** Arrow A (ARA), Corbin 59A1 (C059A1), Corbin 60 (C06), Corbin Russwin L4 (CL4), Kwikset (KW1), Russwin D1 (RD1), Sargent LA (SAL), Schlage E (SCE), Schlage F (SCF), Weiser E (WRE), Yale 8 (YA8), Yale GA (YGA)
ALL CYLINDERS 6-PIN. CAN ALSO BE PINNED 5-PIN.
- **IC Keyway Cylinder** Tell, Best A (BA), Best B (BB), Best C (BC), Best D (BD), Best E (BE), Best F (BF), Best G (BG), Best H (BH), Best J (BJ), Best K (BK), Best L (BL), Best M (BM), Best Q (BQ), Best U (BU), Black construction core (BLK), Less core (00), Not specified (XX)
AVAILABLE 6- OR 7-PIN
- **Keying Options** Grand master key (GMK), construction master key (CMK), master key (MK), keyed different (KD), keyed alike (KA), interchangeable core uncombined (IC), 0-bitted (0BIT)

TELL MANUFACTURING, INC — Page 5 — 2012

CORPORATE OFFICE: 18 Richard Drive, Lititz, PA 17543 TOLL FREE: 800-433-4047 PHONE: 717-625-2990 FAX: 717-625-7095

OTHER LOCATIONS: HOUSTON, TEXAS ELKHART, INDIANA MIRA LOMA, CALIFORNIA

WEBSITE: www.tellmfg.com



LC1200 Series Function Chart

FUNCTION	FUNCTION NO.	OUTSIDE	INSIDE	FUNCTION DESCRIPTION	ANSI NO.
Entrance	81			<ul style="list-style-type: none"> Deadlocking latchbolt operated by lever from either side Outside lever locked by push/turn button from inside Unlocked by key from outside or rotating inside lever When outside lever locked by push and turn button from inside, key from outside or rotating inside lever retracts latch, does not unlock outside lever 	F81
Office	82			<ul style="list-style-type: none"> Deadlocking latchbolt operated by lever from either side except when outside lever is locked by push button on inside. When outside lever is locked, operating key in outside lever or operating inside lever unlocks push button and retracts latchbolt. Closing door does not release push button 	F82
Storeroom	86			<ul style="list-style-type: none"> Deadlocking latchbolt operated by rotating inside lever or key in outside lever Outside lever always fixed 	F86
Classroom	84			<ul style="list-style-type: none"> Deadlocking latchbolt operated by lever from either side Outside lever locked or unlocked by key from outside Inside lever always operates latch 	F84
Passage Hall/Closet	75			<ul style="list-style-type: none"> Latchbolt operated by lever from either side at all times 	F75
Privacy Bedroom/Bathroom	76			<ul style="list-style-type: none"> Latchbolt operated by lever from either side Outside lever locked by push button on inside Unlocked by emergency release on outside, rotating inside lever, or closing door 	F76
Single Dummy	01			<ul style="list-style-type: none"> Pull lever one side No mechanical operation 	

ACCESSORIES



LC1200 Series Latches

CL100181 —
2-3/4" Guarded, US32D

CL100531 —
2-3/4" Guarded, US3

CL100182 —
2-3/4" Guarded with
kickoff, US32D

UL listed guarded
latchbolt with
deadlatching function.
1/2" throw. 2-3/4"
backset. Fits 161 door
prep (2-1/8" hole, 1"
latch hole).



CL100906 —
2-3/4" Unguarded,
US32D

CL100907 —
2-3/4" Unguarded
with kickoff, US32D

UL listed unguarded
latchbolt with non-
deadlatching function.
1/2" throw. 2-3/4"
backset. Fits 161
door prep (2-1/8"
hole, 1" latch hole).



LC1200 Series Strikes

CL100186 —
ASA Strike, US32D

CL100187 —
ASA Strike, US3

CL100415 —
ASA Strike, US10B

For metal frames.
(1-1/4" x 4-7/8" x
3/32").



CL100191 —
T Strike, US32D

CL100189 —
T Strike, US3

CL100420 —
T Strike, US10B

For wood frames.
(1-1/8" x 2-3/4" x
3/32").

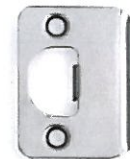


CL100190 —
F Strike, US32D

CL100192 —
F Strike, US3

CL100581 —
F Strike, US10B

For wood residential
applications.
(1-5/8" x 2-1/4" x
3/32").

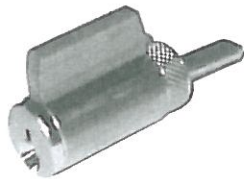


LC1200 Series Non-Restricted Keyway

CL100219 —
Cylinder, Schlage C, US26D

CL100584 —
Cylinder, Schlage C, US4

Standard brass 6-pin cylinder
SCC keyway, optional keyways
available, (see price list).



CL100268 —
IC Core Best A 6 Pin, US26D

CL100270 —
IC Core Best A 7 Pin, US26D

CL100269 —
IC Core Best A 6 Pin, US4

CL100271 —
IC Core Best A 7 Pin, US4

Small format interchangeable
core brass cylinder 6-pin
standard, 7-pin available. Best
"A" keyway standard.



LC1200 Series Tell Restricted Keyway

TELL CYLINDERS:

CL101503 —
6 pin Tell cylinder, US26D

CL101504 —
6 pin Tell cylinder, US4



TELL INTERCHANGEABLE
CORES:

CL101499 —
6 pin Tell IC core, US26D

CL101500 —
6 pin Tell IC core, US4

CL101501 —
7 pin Tell IC core, US26D

CL101502 —
7 pin Tell IC core, US4



FINISHES: US32D=Satin Stainless Steel, US3=Bright Brass, US26D=Satin Chrome, US4=Satin Brass, US10B=Oil Rubbed Bronze

TELL MANUFACTURING, INC — Page 7 — 2012

CORPORATE OFFICE: 18 Richard Drive, Lititz, PA 17543 TOLL FREE: 800-433-4047 PHONE: 717-625-2990 FAX: 717-625-7095

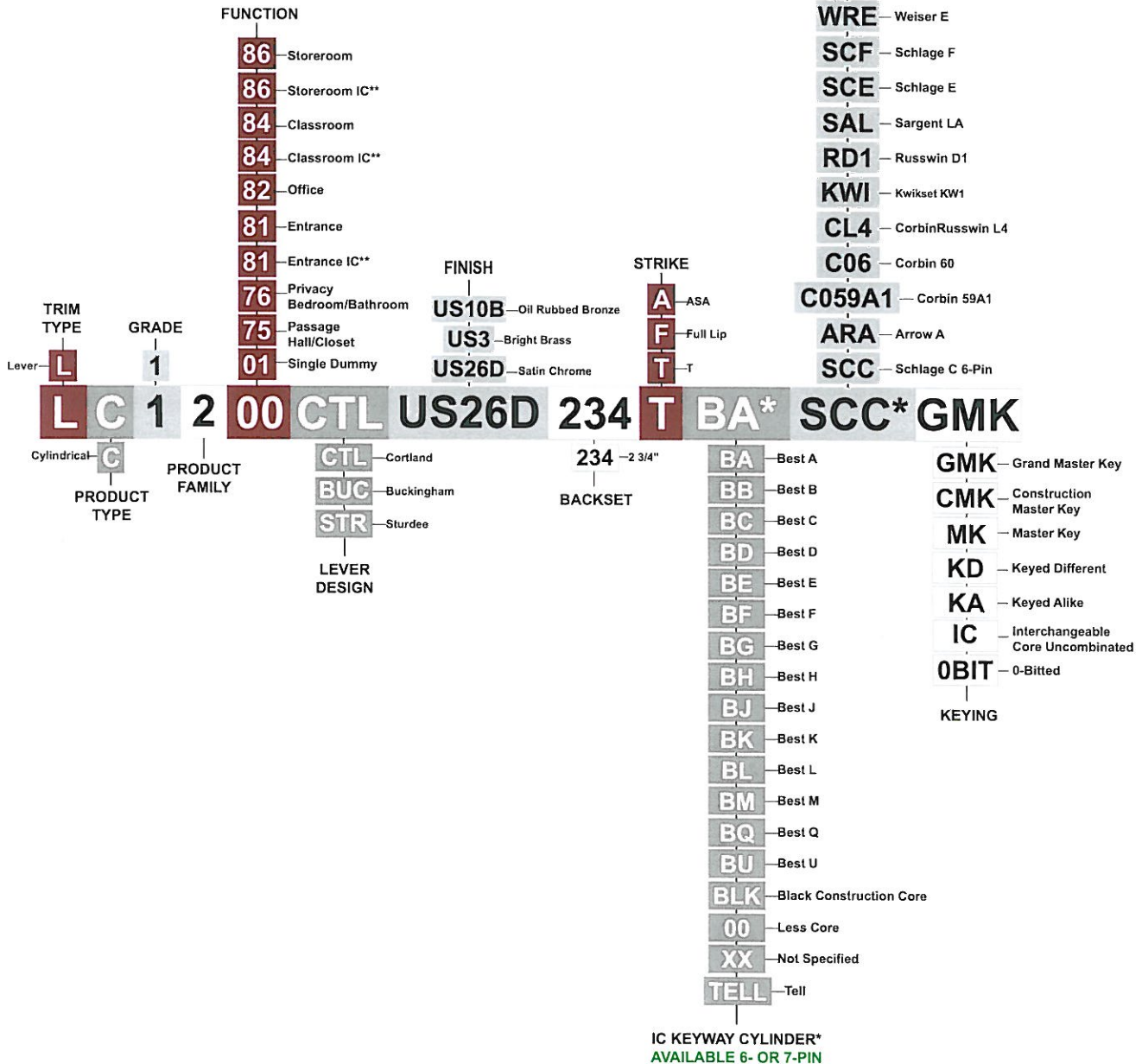
OTHER LOCATIONS: HOUSTON, TEXAS ELKHART, INDIANA MIRA LOMA, CALIFORNIA

WEBSITE: www.tellmfg.com



How to Order LC1200 Series

NON-IC KEYWAY CYLINDER*
 ALL CYLINDERS AVAILABLE 6-PIN. CAN ALSO BE PINNED 5-PIN.
 TELL KEYWAY CYLINDER IS AVAILABLE ONLY KEYED TO 6-PIN.



* Choose one keyway format; either IC KEYWAY CYLINDER or Non-IC KEYWAY CYLINDER
 ** IC functions in Satin Chrome (26D) only