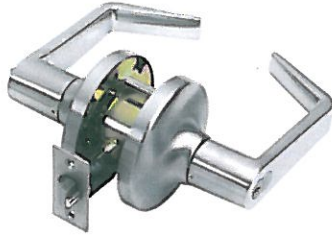


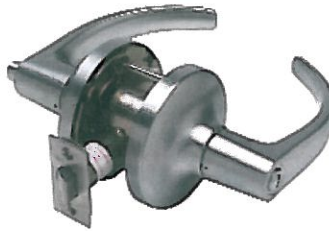


# LC1200 SERIES

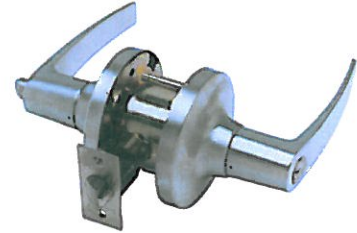
## Heavy-Duty Commercial Grade 1 Leversets



**Cortland (CTL)**



**Buckingham (BUC)**



**Sturdee (STR)**

### Standard Features

- **Performance** Complies with ANSI A156.2, Series 4000, Grade 1, (800,000 cycles), UL listed for 3 hour fire door ANSI A117.1 American Disabilities Act (ADA)
- **Chassis** Cylindrical, steel - coated with zinc dichromate (corrosion resistance), freewheeling clutch (added security from hammer attacks), independent spring cages
- **Lever** Non-handed, solid cast
- **Latch** 1-1/8" x 2-1/4", square corner faceplate, 1" housing diameter (stainless steel), 1/2" throw
- **Rose** 3-1/2" diameter
- **Backset** 2-3/4"
- **Strike** Square corner 1-1/4" x 4-7/8" ANSI **ASA Strike**
- **Standard Cylinder** Standard cylinder Schlage (SCC) - 6-pin solid brass, C keyway, keyed different (KD).
- **Keys** Two nickel silver per lock cylinder
- **Cylinder** Other manufacturers including small format interchangeable cores
- **Door Range** 1-3/8" - 2"
- **Door Preparation** 2-1/8" diameter for lever, 1" diameter for latchbolt. Fits standard 161 door prep with through-bolting through the door.
- **Warranty** 5 year limited

### Optional Features

- **Strike** **T Strike** (1-1/8" x 2-3/4"), and **F Strike** (full lip)

### Keying Options

- **Tell Cylinder** Restricted Tell keyway cylinder can key both the cylinder and interchangeable core in one lock. The cylinders and IC cores are interchangeable. Tell keyway cylinder is available **only** keyed to 6-pin. Tell IC cylinder can be keyed to 6-pin or 7-pin interchangeable core (IC).
- **Other Cylinder Options** Arrow A (ARA), Corbin 59A1 (C059A1), Corbin 60 (C06), Corbin Russwin L4 (CL4), Kwikset (KW1), Russwin D1 (RD1), Sargent LA (SAL), Schlage E (SCE), Schlage F (SCF), Weiser E (WRE), Yale 8 (YA8), Yale GA (YGA)  
**ALL CYLINDERS 6-PIN. CAN ALSO BE PINNED 5-PIN.**
- **IC Keyway Cylinder** Tell, Best A (BA), Best B (BB), Best C (BC), Best D (BD), Best E (BE), Best F (BF), Best G (BG), Best H (BH), Best J (BJ), Best K (BK), Best L (BL), Best M (BM), Best Q (BQ), Best U (BU), Black construction core (BLK), Less core (00), Not specified (XX)  
**AVAILABLE 6- OR 7-PIN**
- **Keying Options** Grand master key (GMK), construction master key (CMK), master key (MK), keyed different (KD), keyed alike (KA), interchangeable core uncombined (IC), 0-bitted (0BIT)

**TELL MANUFACTURING, INC** — Page 5 — 2012

CORPORATE OFFICE: 18 Richard Drive, Lititz, PA 17543 TOLL FREE: 800-433-4047 PHONE: 717-625-2990 FAX: 717-625-7095  
OTHER LOCATIONS: HOUSTON, TEXAS ELKHART, INDIANA MIRA LOMA, CALIFORNIA  
WEBSITE: www.tellmfg.com