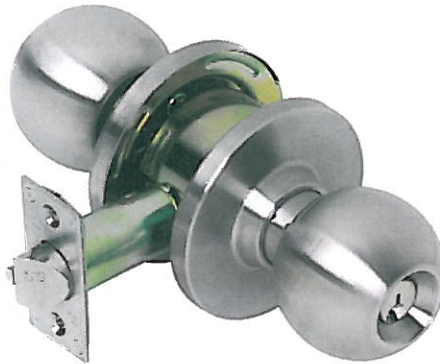




# KC1100 SERIES

## Heavy-Duty Commercial Grade 1 Knobsets



Empire (EMP)

### Standard Features

- **Performance** Complies with ANSI A156.2 - 2003, Series 4000, Grade 1, 800,000 cycles, UL listed for 3 hour fire door
- **Chassis** Cylindrical, steel - coated with zinc dichromate (corrosion resistance)
- **Latch** 1-1/8" x 2-1/4", square corner faceplate, 1" housing diameter (stainless steel), 1/2" throw
- **Rose** 3" diameter
- **Backset** 2-3/4"
- **Strike** Square corner 1-1/4" x 4-7/8" ANSI **ASA Strike**
- **Standard Cylinder** Standard cylinder Schlage (SCC) - 6-pin solid brass, C keyway, keyed different (KD).
- **Keys** Two nickel silver per lock cylinder
- **Door Range** 1-3/8" to 2"
- **Door Preparation** 2-1/8" diameter for bore, 1" diameter bore for latchbolt. Fits standard 161 door prep.
- **Warranty** 5 year limited

### Optional Features

- **Strike** **T Strike** (1-1/8" x 2-3/4"), and **F Strike** (full lip)

### Keying Options

- **Tell Cylinder** Restricted Tell keyway cylinder available, optional. Tell keyway cylinder is available **only** keyed to 6-pin.
- **Other Cylinder Options** Arrow A (ARA), Corbin 59A1 (C059A1), Corbin 60 (C06), Corbin Russwin L4 (CL4), Kwikset (KW1), Russwin D1 (RD1), Sargent LA (SAL), Schlage E (SCE), Schlage F (SCF), Weiser E (WRE), Yale 8 (YA8), Yale GA (YGA)  
**ALL CYLINDERS 6-PIN. CAN ALSO BE PINNED 5-PIN.**
- **Keying Options** Grand master key (GMK), construction master key (CMK), master key (MK), keyed different (KD), keyed alike (KA), 0-bitted (OBIT)