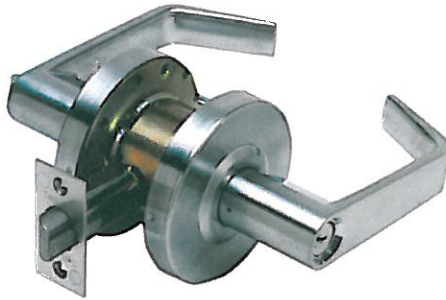


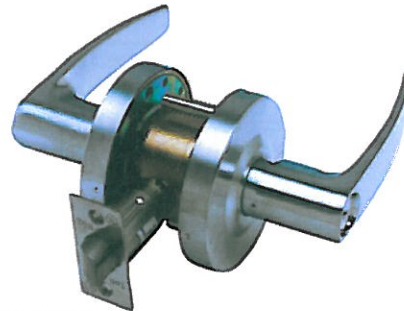


LC2600 SERIES

Standard-Duty Cylindrical Grade 2 Leversets



Cortland (CTL)



Sturdee (STR)

Standard Features

- **Performance** Complies with ANSI A156.2, Series 4000, Grade 2, 400,000 cycles, ANSI A117.1 accessibility (ADA) code, UL listed for 3 hour fire door
- **Chassis** Cylindrical, steel-coated w/ zinc dichronate (corrosion resistance)
- **Lever** Non-handed
- **Latch** 1-1/8" x 2-1/4" square corner faceplate, 3/4" housing, 1/2" throw (stainless steel)
- **Rose** 3-1/4" diameter
- **Thru-bolts** Removable thru-bolts standard
- **Backset** 2-3/8" or 2-3/4"
- **Strike** Square corner 1-1/4" x 4-7/8" ANSI ASA Strike
- **Standard Cylinder** Standard cylinder Schlage (SCC) - 6-pin solid brass, C keyway, keyed different (KD).
- **Keys** Two nickel silver per lock
- **Door Range** 1-3/8" to 2"
- **Door Preparation** 2-1/8" diameter for bore, 1" diameter latch bore. Fits standard 161 door prep.
- **Warranty** 1 year limited

Optional Features

- **Chassis** Freewheeling clutch
- **Strike** **T Strike** (1-1/8" x 2-3/4"), and **F Strike** (full lip)

Keying Options

- **Tell Cylinder** Restricted Tell keyway cylinder available, optional. Tell keyway cylinder is available **only** keyed to 6-pin.
- **Other Cylinder Options** Arrow A (ARA), Corbin 59A1 (C059A1), Corbin 60 (C06), Corbin Russwin L4 (CL4), Kwikset (KW1), Russwin D1 (RD1), Sargent LA (SAL), Schlage E (SCE), Schlage F (SCF), Weiser E (WRE), Yale 8 (YA8), Yale GA (YGA)
ALL CYLINDERS 6-PIN. CAN ALSO BE PINNED 5-PIN.
- **Keying Options** Grand master key (GMK), construction master key (CMK), master key (MK), keyed different (KD), keyed alike (KA), 0-bitted (0BIT)

TELL MANUFACTURING, INC — Page 33 — 2011

CORPORATE OFFICE: 18 Richard Drive, Lititz, PA 17543 **TOLL FREE:** 800-433-4047 **PHONE:** 717-625-2990 **FAX:** 717-625-7095
OTHER LOCATIONS: HOUSTON, TEXAS ELKHART, INDIANA MIRA LOMA, CALIFORNIA
WEBSITE: www.tellmfg.com